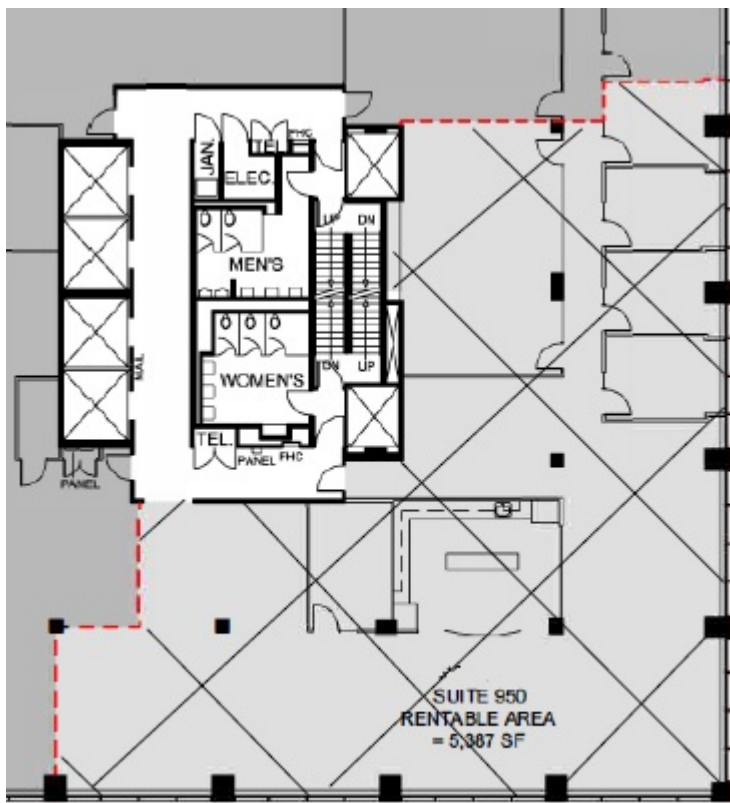
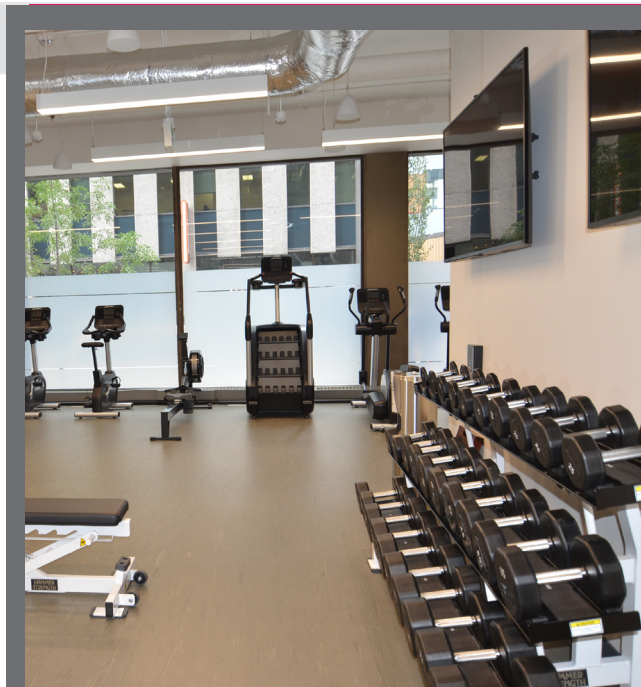


Building Highlights

- Newly renovated fitness centre and conference room
- Steps away from many restaurants, stores and services
- Connected to the Plus 15 system
- Easy access to transit
- Full Service Restaurant (Green Bean)

For Sublease Calgary House 550 6th Avenue SW

Sublandlord: MCW Hemisphere Ltd
Landlord: Manulife
Premises: Suite 950, 5387 sf
Term: September 2023
Available: February 1, 2023
Op. Costs & Taxes: \$16.29 psf



Contact:

Kimberly Stringile
587.356.2074

Kimberly@COREcommercial.ca

Lori King
587.356.2075

Lori@COREcommercial.ca



COREcommercial.ca

For Sublease

Calgary House 550 6th Avenue SW

5,387 square feet

Mix of office and open area

Short term sublease

Plug & Play

Fully furnished

Aggressive sublease rates



This document has been prepared by CORE Commercial Real Estate Ltd for advertising and general information purposes only. CORE CRE makes no guarantees, representations or warranties of any kind, expressed or implied, regarding the information including, but not limited to warranties of content, accuracy, or reliability. Any interested party should undertake their own inquiries as to the accuracy of the information. This publication is the copyrighted property of CORE Commercial Real Estate Ltd. © 2021