

For Lease

1921 10 Avenue SW



highlights



- Development Permit in place for a daycare centre
- Bright open plan on 2 levels
- 3,400 square feet
- Opportunity to customize space
- 4 Parking stalls; market rate
- Quick walk to Sunalta station

For Lease

1921 10 Avenue SW

Landlord: A & M Developments Inc.

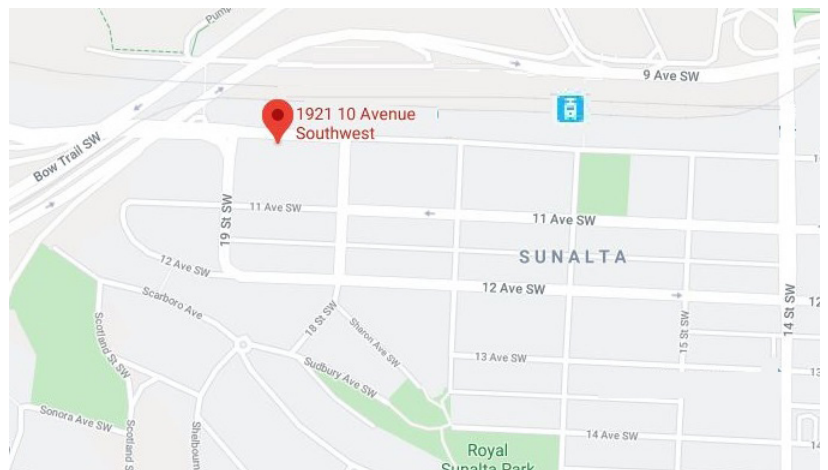
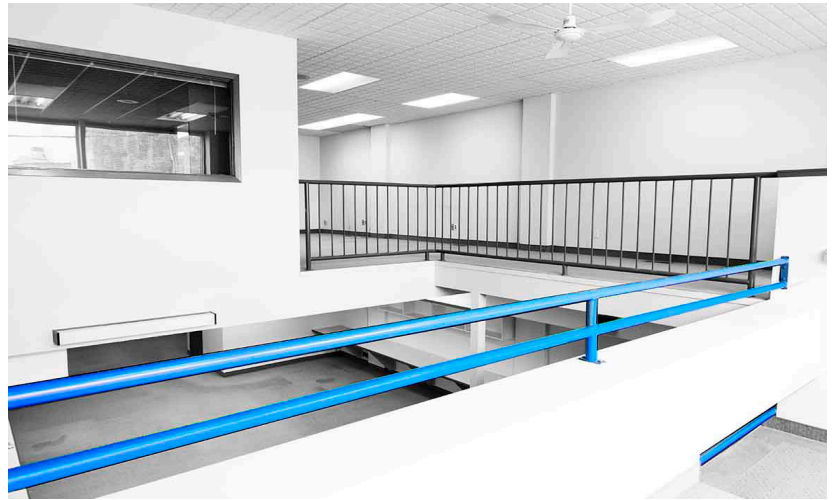
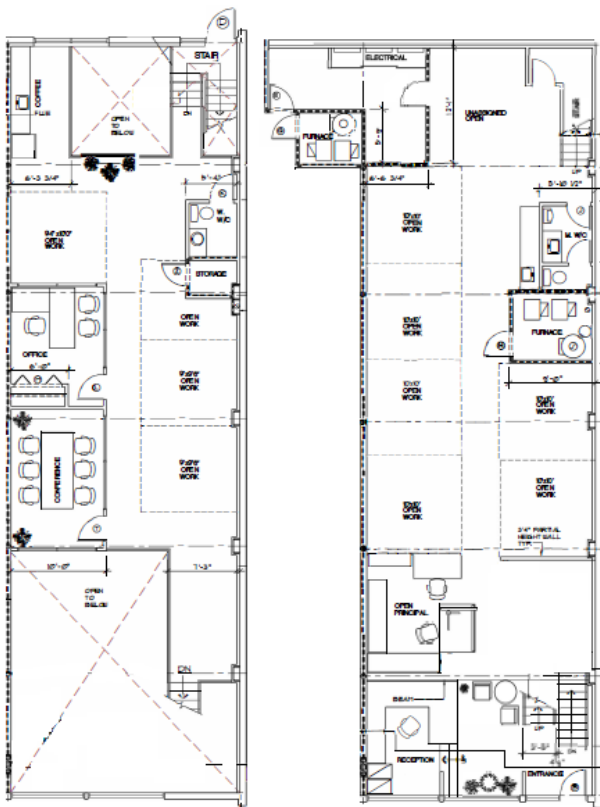
3,400 square feet over 2 levels

Construction Plans for a daycare centre with capacity of 42 children available. Development permit in place

Tenant Improvement Allowance

Atriums provide an abundance of light on the lower level

floor plan



CORE
COMMERCIAL
REAL ESTATE

Lori King
Lori@COREcommercial.ca
587.356.2075

Jeff Thomson
Jeff@COREcommercial.ca
587.356.2074

CORE Commercial Real Estate
1230, 250 6th Avenue SW
Calgary, AB T2P3H7

This document has been prepared by CORE Commercial Real Estate Ltd for advertising and general information purposes only. CORE CRE makes no guarantees, representations or warranties of any kind, expressed or implied, regarding the information including, but not limited to warranties of content, accuracy, or reliability. Any interested party should undertake their own inquiries as to the accuracy of the information. This publication is the copyrighted property of CORE Commercial Real Estate Ltd. © 2020